



WINDOWS MAC OS X LINUX IOS ANDROID WINDOWS PHONE WEB OFFICE

TIP US

SEARCH



Root Samsung Galaxy Spica i5700 With Leshak's Kernel

by Aatif Khan on May 19, 2010

133 Comments

As promised, I am back with a complete, step-by-step guide to rooting Samsung's Galaxy Spica/Lite /Portal i5700 Android handset, using Leshak's Kernel Spica v.LK2.02. Not only is this root easy without any complex commands, but also it brings nicety such as full root, su+Superuser, support for ext2, ext3 and ext4 SD card partitions, recovery mode, etc.

A few things before I begin with the walkthrough. First, the whole credit for this guide, the kernel used and everything else goes to [Leshak](#), the administrator of [Samdroid forum](#). I have just simplified his guide for average users, since most of the forum is in Russian. Second, this guide assumes that your device is running on firmware 2.1, any version above JC3, and you know how to use Odin. If you want to know how to upgrade your firmware, check out our [2.1 update guide](#) for Spica.

Third, this guide also assumes that your Samsung Android drivers (USB modem and Composite device) are properly installed, and that you have Android Debug Bridge (adb) properly configured. If not, check out the 2.1 update guide for drivers, and [tutorial](#) for setting up adb.

Please remember that any modifications to your firmware are potentially dangerous, and while they reward greatly, you must proceed at your own risk. If you don't know what you are doing, it is advisable to avoid rather than having a bricked device. You have been warned!

This process will not delete any of your files or settings, both in SD card and internal memory.

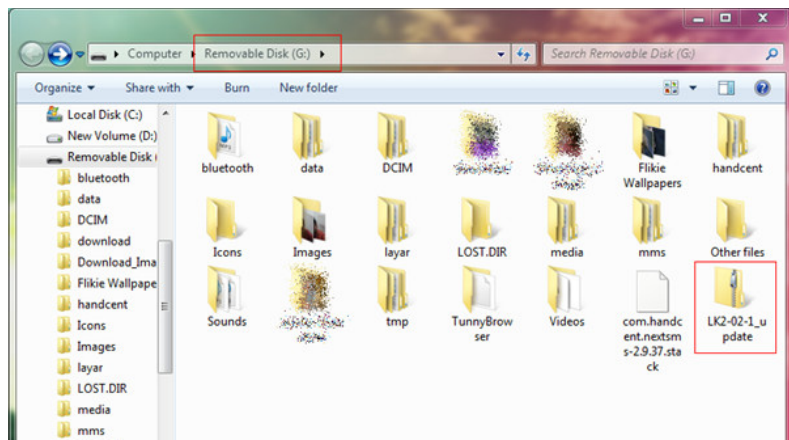
Without further ado, here's how to gain root and flash Leshak's kernel 2.02.

To begin with, download these two files.

1. [LK2-02-1_update.zip](#)
2. [i5700_LK2-02_PDA.zip](#)

Also download the Odin Multiloader for Android [here](#) if you don't have it already. You need the spica_jc3.ops file for this guide, which we have bundled with Odin.

Mount your SD card, and place LK2-02-1_update.zip in the root of SD card (it should be inside the root folder of the card, not any subfolder). See the screenshot below.



Your email

SUBSCRIBE

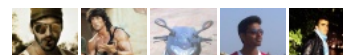
Join 35,000+ other readers

Búscanos en Facebook



AddictiveTips
Me gusta

A 55 502 personas les gusta AddictiveTips.



AddictiveTips



Follow

+1

+45,518

POPULAR POSTS

[50 Best Windows 8.1 Themes](#)

Be it an application or an entire operating system, the ability to apply themes to...

[55 Best Mac OS X Apps Of 2013](#)

2013 was a good year for Apple's desktop operating system and its users. With the...

READERS ACTIVITY

People

Recent

Popular

Most Discussed

[50 Best Windows 8.1 Themes](#)

7 comments · 22 hours ago

[55 Best Mac OS X Apps Of 2013](#)

1 comment · 1 day ago

[8 Best Music Players For Android](#)

35 comments · 1 week ago

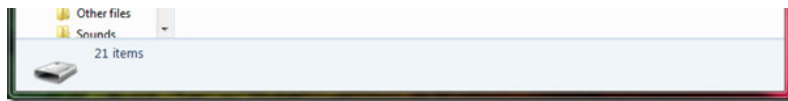
[50 Best Firefox Addons Of 2013](#)

8 comments · 2 days ago

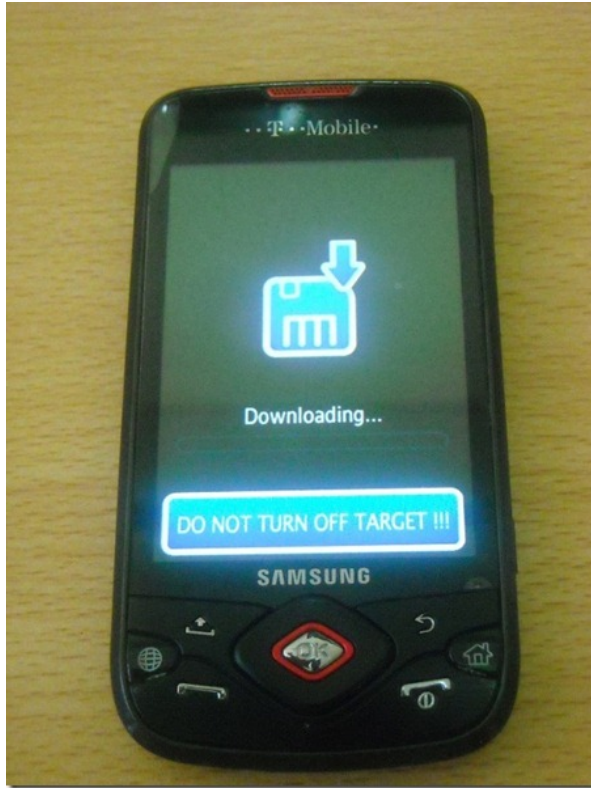
[Yunio Is A Cross-Platform Cloud Storage & Sync Service With Up To 1TB Of Free Space](#)

18 comments · 21 hours ago

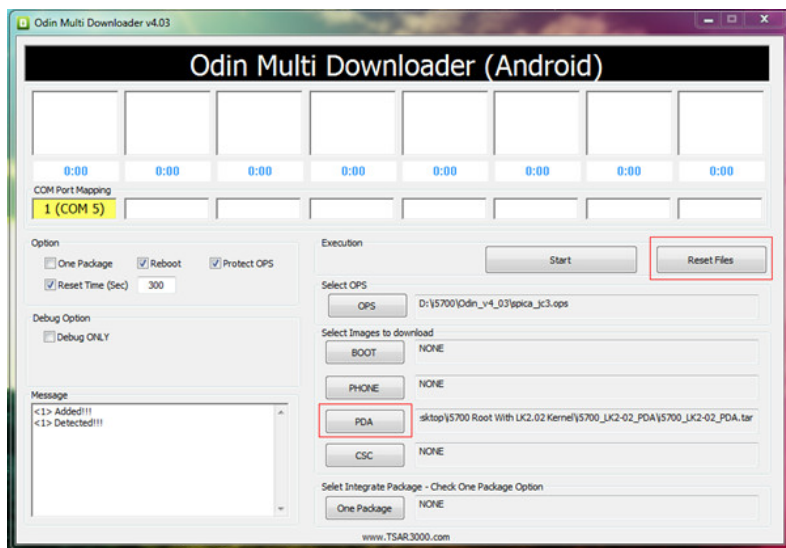
community on DISQUS



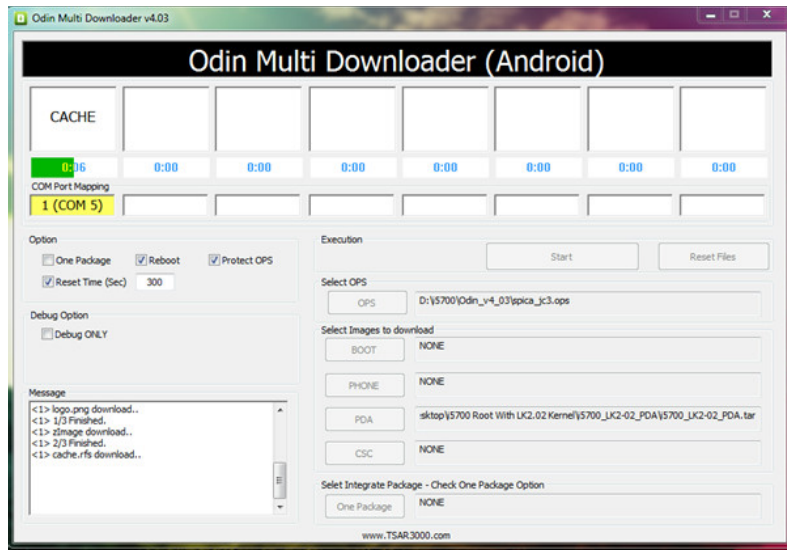
Unmount the SD card in Windows, turn phone off and remove your SIM card just to be safe. Let the SD card remain inserted, and put the device in Download Mode by pressing and holding Volume Down + Camera + Call End keys. The phone screen should look like this:



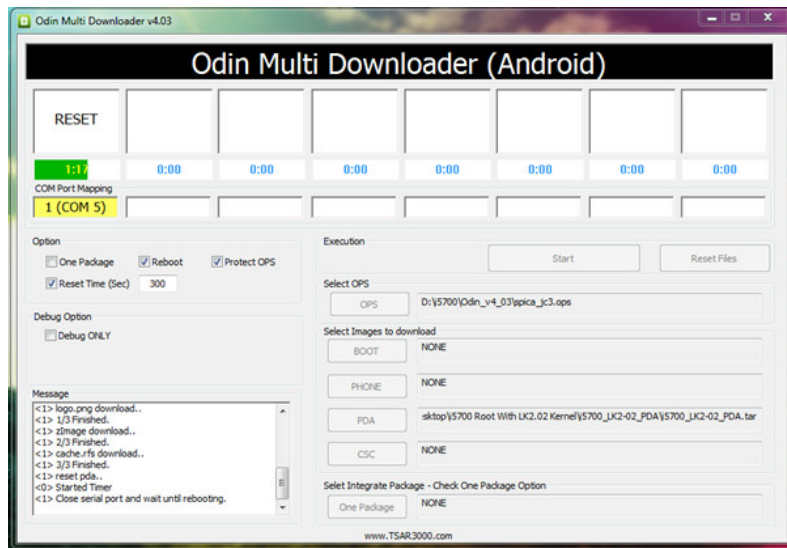
Your phone should not be connected with the PC at this time via USB cable. Run Odin as administrator, and load the extracted **i5700_LK2-02_PDA.tar** file as PDA in Odin. Load **spica_jc3.ops** as the OPS file. You may need to click Reset Files once before Odin will clear previous settings. Make sure your selections match the screenshot below.



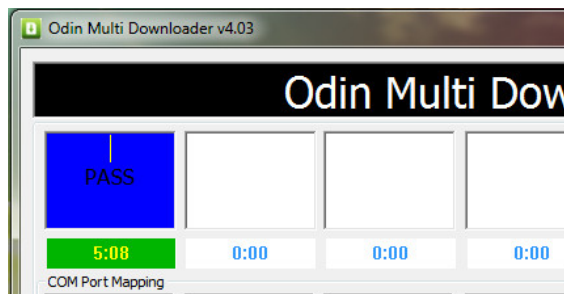
With your device in Download Mode, attach it to the PC via USB cable. The message box will now show the Added and Detected message, as shown above. If all is set and handset has been detected, click the Start button to begin flashing the new kernel to the device.

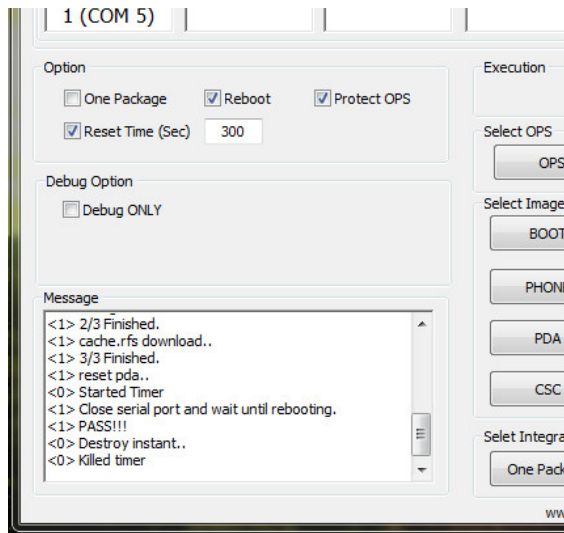


Wait for the flash to finish until the following screen appears. The device will reboot during this time and enter recovery mode.



To be safe, wait for the process to finish entirely, which shall be indicated by a 'PASS' replacing the 'RESET' message.



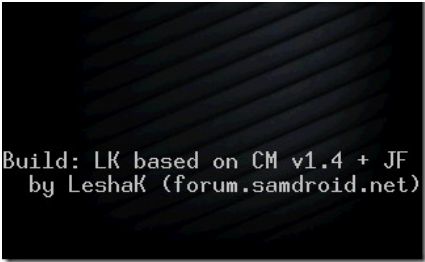


Meanwhile, your phone's screen will be showing the following image.




Use the D-pad to move up and down between options. Select 'Apply any zip from SD' and press OK button. The next screen will show all the zip files present in the root of your SD card. Select the one indicated in the screenshot below, and press OK.





```
Build: LK based on CM v1.4 + JF
      by Leshak (forum.samdroid.net)
```

You will be asked for confirmation to install the update. Press the Home button to confirm.

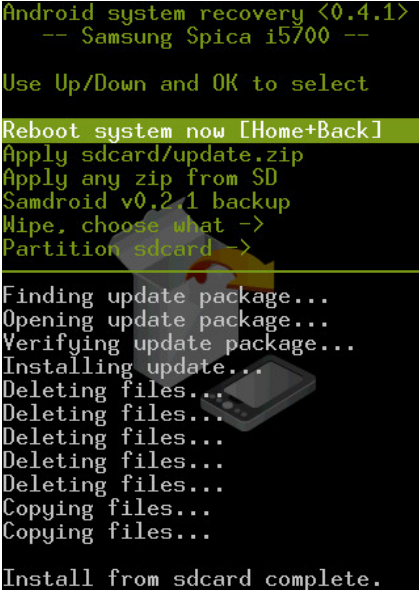


```
SPICA
samdroid.net

Build: LK based on CM v1.4 + JF
      by Leshak (forum.samdroid.net)

-- Installing new image!
-- Press HOME to confirm, or
-- any other key to abort..
```

The update will install, delete some files, copy some more, and after about a minute you will see the following screen.



```
Android system recovery <0.4.1>
-- Samsung Spica i5700 --

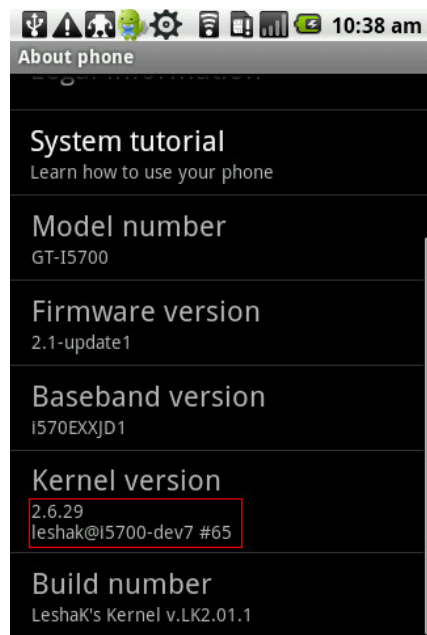
Use Up/Down and OK to select

Reboot system now [Home+Back]
Apply sdcard/update.zip
Apply any zip from SD
Samdroid v0.2.1 backup
Wipe, choose what ->
Partition sdcard ->

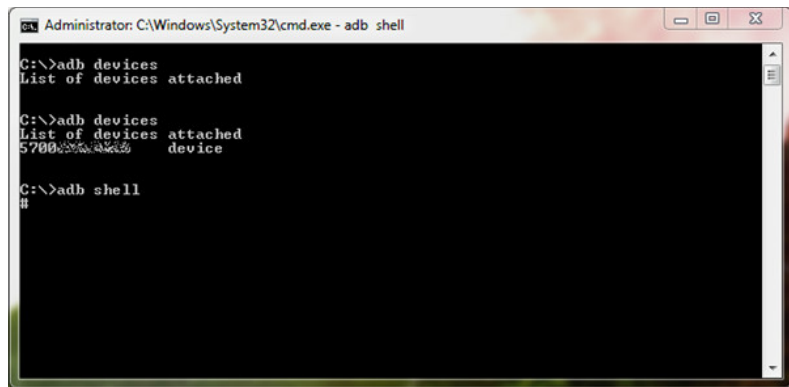
Finding update package...
Opening update package...
Verifying update package...
Installing update...
Deleting files...
Deleting files...
Deleting files...
Deleting files...
Deleting files...
Copying files...
Copying files...

Install from sdcard complete.
```

Reboot the device by either clicking OK on Root system now, or press the Home + Back keys together. The device will reboot once more and that's it: you have successfully rooted your Spica. Go to Settings > About Phone on your device and scroll down to verify the new kernel.



You may also run the adb command to verify su status, indicated by the command prompt showing '#' instead of '\$' when you access the shell.



With Leshak's Kernel 2.02, you get the following advantages (as mentioned on the Samdroid forum)

1. Fully rebuilds Spica Linux Kernel from Samsung sources, plus:

- full root in adb (you can use cp etc, not only cat)
- root – su+Superuser
- add Netfilter/iptables (Walldroid, Wifi Tether)
- support ext2/ext3/ext4
- cifs (smb – support windows network shares)
- squashfs (for recovery utils)

2. Recovery

- apply update.zip files (android install/update system)
- samdroid backup – create .tar file (system + data), restore via Odin
- wipe (data, cache, dalvik-cache)
- you can repartition your SD card on 2 partitions FAT32 + ext2

3. **Apps2sd** based on CyanogenMod apps2sd
- move applications from internal memory to SD card with two partitions (FAT32 + ext2/3/4)

Soon I will come up with a guide on configuring and using apps2sd on Spica. Meanwhile, happy rooting and good luck. Please use this process with care, we are not responsible for bricked devices. Feedback, questions and general comments are greatly appreciated.

DO YOU LIKE THIS POST?

 6

 30

Recommend  104

Share  2

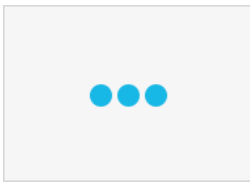


[Email a Friend](#)

RECOMMENDED FOR YOU



Download And Install CyanogenMod Android 2.2 Froyo On Samsung Galaxy Spica i5700



How To: Install Android 2.2 Froyo On Samsung Galaxy Spica i5700



Flash / Install Undervolt Kernel On Samsung Galaxy Spica To Save Battery Life

OneNote 2010: Change Video Recording Settings

How To Take Screenshots Of Android Device

133 comments

★ 0



Join the discussion...

Oldest ▾ AddictiveTips

Share ↗ Login ▾

**Lalit Kultham** • 4 years ago

I have Firmware version- 2.1

Baseband Version- i570EDDJB2

can i follow your guide for my baseband version.

2 ^ | ▾ • Reply • Share ›

**Aatif** → Lalit Kultham • 4 years ago

This guide is for firmware versions JC3 and above. Since you have JB2 yet, I would advise to first upgrade to a newer firmware version (you can follow my guide here <http://www.addictivetips.com/m...>

after that, you can root using this kernel

1 ^ | ▾ • Reply • Share ›

**77volturi86** → Aatif • 4 years ago

What happens if I get my device bricked? Is there a way to get it back to normal?

4 ^ | 1 ▾ • Reply • Share ›

**Karthik** → Aatif • 4 years ago

Is this applicable for official release of Eclair 2.1?

My spec is

Baseband: i570EDXJC2

Kernel: 2.6.29 chad.lee@SE-S604 #2

Build no: ECLAIR.DXJC4

Location: Singapore (Starhub for APN)

Thanks for the help,

1 ^ | ▾ • Reply • Share ›

**shane** → Aatif • 4 years ago

hey do you have msn or gtalk cos i need help with rooting my spica. im totally new to all this.

^ | ▾ • Reply • Share ›

**zeyad** → Aatif • 3 years ago

i did wat u said and there is a samdroid downloading and it stpped on that

^ | 1 ▾ • Reply • Share ›

**zar** → Aatif • 2 years ago

sir, can i ask for some help please..my samsung spica gt-i5700 hangs up most of the time and im getting annoyed with it already. do you have any suggestions what i need to do to make this work better? below are the phone's specs:

firmware version: 2.1-update 1

baseband version: i570EDAJD1

kernel version: 2.6.29 chad.lee@SES604 #2

build number: ECLAIR.DAJD2

any help would greatly be appreciated..

thanks you..

^ | 1 ▾ • Reply • Share ›

**Lalit Kultham** • 4 years ago

TOPICS

Windows
Mac OS X
Linux
iOS
Android
Windows Phone
Office
Web

AUTHORS

Sameed
Waqas
Aatif
Adi

Haroon
Awais
Zayed

Your email

Join 35,000+ other readers

SUBSCRIBE

ABOUT ADDICTIVETIPS

AddictiveTips is a tech blog focused on helping users find simple solutions to their everyday problems. We review the best desktop, mobile and web apps and services out there, in addition to useful tips and guides for Windows, Mac, Linux, Android, iOS and Windows Phone. [Read more...](#)

© 2014 AddictiveTips. Hosted by [Presslabs](#)

[ABOUT](#) [FEATURED ARTICLES](#) [ARCHIVES](#) [CONTACT](#) [DISCLOSURE](#) [PRIVACY POLICY](#) [APPS](#) [TIP US](#)